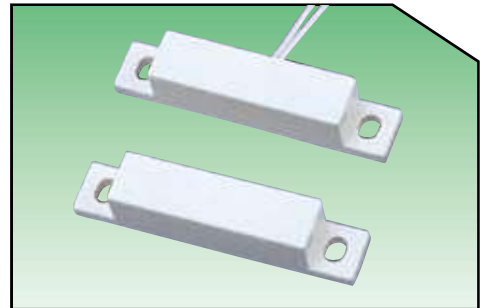


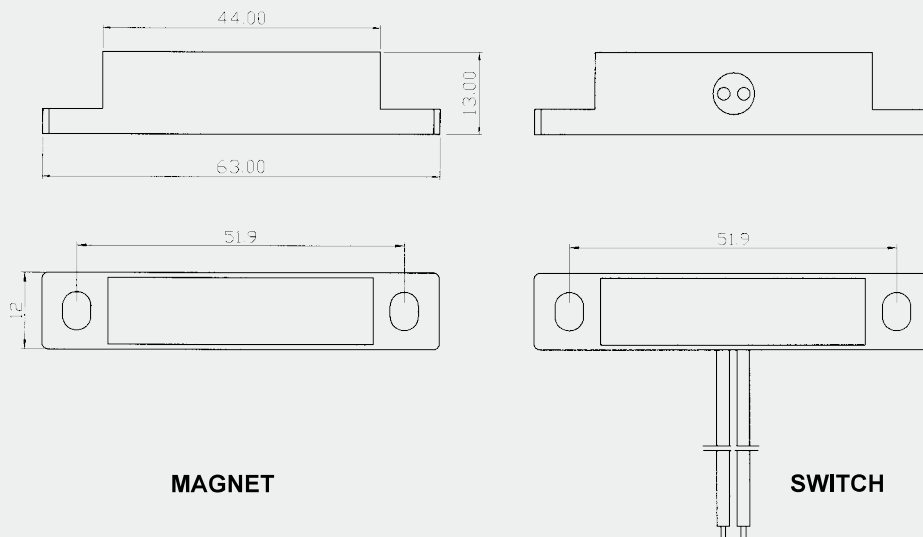
**Specification: BS-2025**

- \* Surface mounted contact
- \* Center leads with #22AWG 18" length
- \* Screw mount
- \* Special leads on request
- \* Switches or magnets available seperately
- \* Resistor, Diode and Supervisory Loop available on request
- \* Colors: White, Brown, Grey

... Surface Mounted



**Dimension (mm):**



MAGNET

SWITCH

**Order Information:**

Part Number	Loop Type	Reed Form	Closed Gap [Inch(mm)]	Depature Gap [Inch(mm)]	Maximum Initial Contact Resistance (Ohm)	Maximum Contact Rating (W)	Maximum Switching Voltage (VDC/VAC)	Maximum Switching Current (A)
BS-2025	Closed	N/O	1 <sup>1</sup> / <sub>4</sub> (31)	1.38 (34)	0.150	10	100	0.5
BS-2025A	Open	N/C	1 (25)		0.150	3	30	0.2
BS-2025C	Closed & Open	SPDT	1 (25)		0.150	3	30	0.2

