

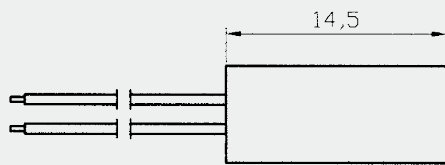
## Specification: **BR-1014**

- \* Super miniature recessed switch
- \* 1/4" diameter straight cylindrical set for flush or counter sunk installations
- \* Standard 18" #22AWG leads
- \* Switch and Magnet available seperately
- \* Wide gap up to 1"+ with 1/4" x 1" rare earth magnet
- \* Colors: White, Brown, Grey

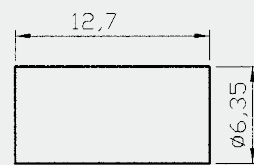
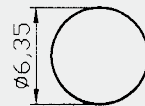
### ... Recessed Mounted



## Dimension (mm):



SWITCH



MAGNET

## Order Information:

Part Number	Loop Type	Reed Form	Closed Gap [Inch(mm)]	Depature Gap [Inch(mm)]	Maximum Initial Contact Resistance (Ohm)	Maximum Contact Rating (W)	Maximum Switching Voltage (VDC/VAC)	Maximum Switching Current (A)
BR-1014	Closed	N/O	3/4 (19)	0.93 (23)	0.150	10	100	0.5